

KF series

50HP

COSTRUZIONE

- Pompa a 3 pistoni tuffanti orizzontali, disponibile in 4 versioni.
- Carter simmetrico dotato di fissaggi inferiori e superiori per sporgenza albero a destra o sinistra.
- Sistema di tenute con camera di ricircolo e lubrificazione in bassa pressione.
- Valvole aspirazione mandata a contatto sferico.
- Lubrificazione a sbattimento.
- **Versioni disponibili con sistema di flussaggio tenute.**

CONSTRUCTION

- Triplex plunger pump, available in 4 versions.
- Patent pending, symmetrical power end design featuring top and bottom mounting holes allowing for easy left to right shaft conversion.
- Low-high pressure packing design with integrated cooling system.
- High volumetric efficiency suction/delivery valves featuring new spherical design of sealing areas.
- Splash lubrication.
- **Flushing systems available on request on selected versions.**



Tipo pompa Pump type	Portata Volume		Pressione Pressure			g/ min r.p.m.	Potenza Power		Peso Weight kg	Dimensioni Dimensions mm
	l/ min	US Gpm	bar	MPa	p.s.i.		hp	kW		
KF 28	93	24.5	210	21	3050	1000	50	37,0	69	526x367x253
KF 30	106	28.0	200	20	2900	1000	55	40,0	69	526x367x253
KF 36	122	32.2	160	16	2300	800	50	37,0	69	526x367x253
	137	36.2	140	14	2050	900	50	37,0	69	526x367x253
KF 40	153	40.0	130	13	1900	1000	52	38,2	69	526x367x253
	170	45.0	110	11	1600	900	49	36,0	69	526x367x253

Portate tecniche con rendimento volumetrico 100% / Volumes are theoretical at 100% volumetric efficiency

OPZIONI TRASMISSIONI DRIVE OPTIONS

Flangia supporto per azionamenti diretti
Flange for direct drive mount



Kit campana e giunto per accoppiamento a motori idraulici SAE J 744 tipo C
Bell housing and coupling for SAE J 744 C hydraulic motor



Riduttore
Gearbox



VERSIONI DISPONIBILI - PUMP OPTIONS



71.SS version

Versioni inox AISI 316 L
Portate: standard
Pressione max:
fino a 200 bar
(SS7193 - SS71106)
Temp. max: 85 °C

AISI 316 L versions
Flow rate: standard
Pressure:
max up to 200 bar (2900
psi)(SS7193 - SS71106)
Water temp: max 85°C



71.SN version

Versioni inox AISI 420
Portate e pressioni
standard
Temp. max: 85 °C

AISI 420 versions
Standard volume and
pressure ratings
Water temp: max 85°C

M version

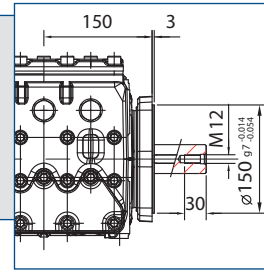
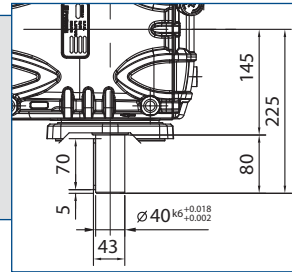
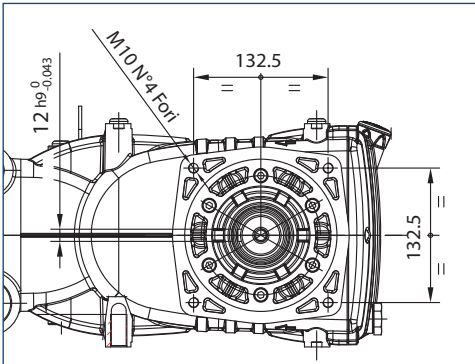
Versioni speciali per fanghi
Portate fino a 113 l/min
Pressione max:
fino a 100 bar

Light mud versions
Flow rate: up to 113 l/min
(30 Gpm)
Pressure: max up to
100 bar (1450 psi)



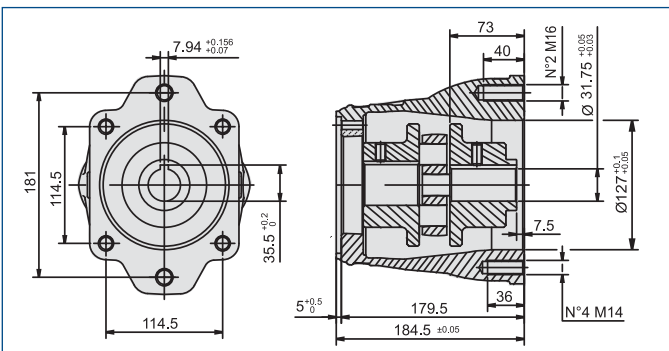
series **KF**
50HP

OPZIONI TRASMISSIONI - DRIVE OPTIONS



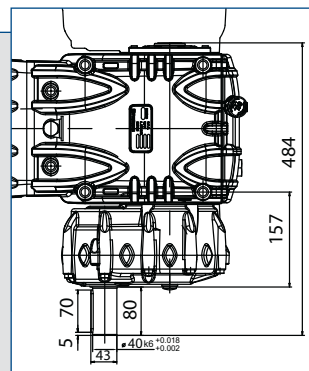
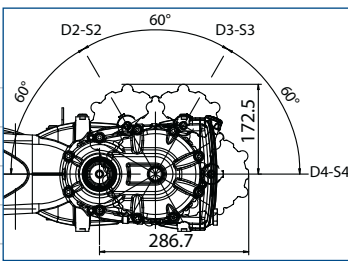
Flangia supporto
per azionamenti
diretti

Flange for direct
drive mount



Kit campana e giunto per accoppiamento
a motori idraulici SAE J 744 tipo C

Bell housing and coupling for
SAE J 744 C hydraulic motor

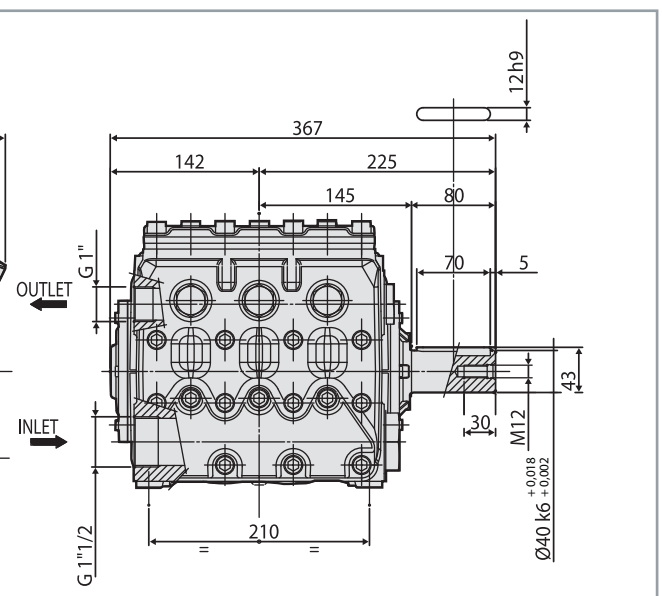
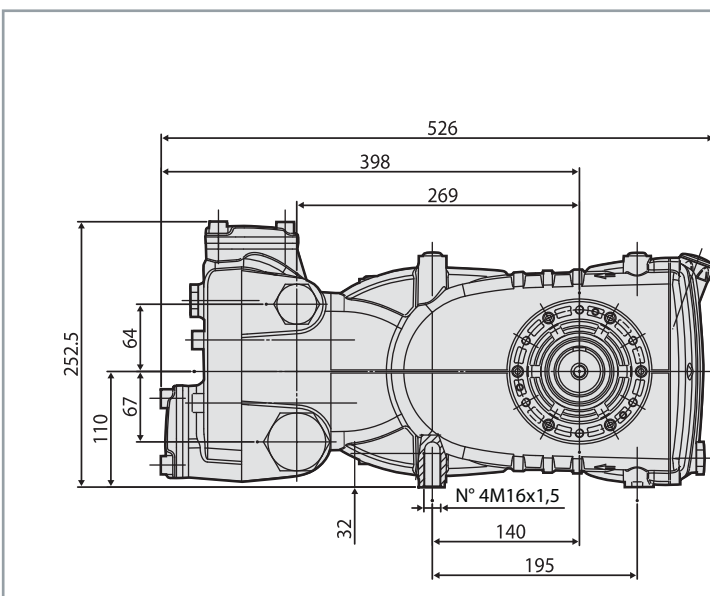


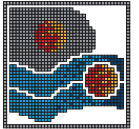
Riduttore / Gearbox

Le pompe KF sono disponibili su richiesta con riduttore
di giri laterale. Il riduttore è disponibile in 3 rapporti ed
installabile a dx o sx della pompa in 4 differenti posizioni.
Rapporti di riduzione: R=1,25:1 - R=1,50:1 - R=1,83:1

KF pumps can be supplied with a optional gearbox
available in 3 different ratios. The gearbox can
be mounted on the left or right side of the pump
in 4 different angles, at customer choice.
Gearbox ratios: R=1,25:1 - R=1,50:1 - R=1,83:1

DIMENSIONI D INGOMBRO - OVERALL DIMENSIONS





ACCESSORI - ACCESSORIES

FILTRI FILTERS

■ F30

Polipropilene
Polypropilene

170/365
microns 8 bar 120 psi
230 l/min 61 gpm

■ F20

Alluminio
Aluminium

170/310
microns

10 bar 145 psi
230 l/min 61 gpm

VALVOLE DI MASSIMA PRESSIONE MAX PRESSURE SETTING VALVES

■ SV2

Ottone
Brass

600 bar 8700 psi
190 l/min 50 gpm

■ SX2

Acciaio inox
Stainless steel

600 bar 8700 psi
190 l/min 50 gpm

REGOLATORI DI PRESSIONE REGULATING VALVES

■ RV2

Ottone
Brass

210 bar 3050 psi
230 l/min 61 gpm

■ NL2

Ottone / Con
leva di bypass
Brass / With
bypass level

210 bar 3050 psi
230 l/min 61 gpm

■ RX1

Acciaio
inox
Stainless
steel

RX1/40 40 bar 580 psi
120 l/min 32 gpm

RX1/100 100 bar 1450 psi
120 l/min 32 gpm

RX1/200 200 bar 2900 psi
120 l/min 32 gpm

RX1/300 300 bar 4350 psi
80 l/min 21 gpm

RX1/400 400 bar 5800 psi
80 l/min 21 gpm

RX1/500 500 bar 7250 psi
80 l/min 21 gpm

RX1/600 600 bar 8700 psi
40 l/min 11 gpm

VALVOLE AUTOMATICHE UNLOADER VALVES

■ VU2

Ottone
Brass

210 bar 3050 psi
230 l/min 61 gpm

■ AL2

Ottone / Con
leva di bypass
Brass / With
bypass level

210 bar 3050 psi
230 l/min 61 gpm

VALVOLE PNEUMATICHE PNEUMATICALLY OPERATED VALVES

■ PN/RV2

Ottone
Brass

210 bar 3050 psi
230 l/min 61 gpm

■ PN/VU2

Ottone
Brass

210 bar 3050 psi
230 l/min 61 gpm

■ PN2

Acciaio inox
Stainless
steel

500 bar 7250 psi
230 l/min 61 gpm

MANOMETRI PRESSURE GAUGES

■ PG1

■ PG2

Attacco Gas 1/4
Connection Gas 1/4

0-120 bar
0-160 bar
0-250 bar
0-400 bar
0-600 bar
0-700 bar

VALVOLE NON RITORNO CHECK VALVES

■ UD1

Prearica
5 bar (72 psi)
Load
5 bar (72 psi)

250 bar 3650 psi
180 l/min 48 gpm

ACCUMULATORI ANTIPULSAZIONI PULSATION DAMPENERS

■ A7

Volume 0,7 l
Volume 0,7 l
Acciaio forgiato
Forged steel

max. 210 bar
max. 3050 psi

■ A7S

Volume 0,7 l
Volume 0,7 l
Acciaio forgiato
Forged steel

max. 330 bar
max. 4750 psi

■ A7X

Volume 0,7 l
Volume 0,7 l
Acciaio inox
Stainless steel

max. 150 bar
max. 2150 psi

LANCE COMPLETE SPRAY GUNS

■ P560

Lunghezza 750/1000mm
Lenght 750/1000mm

600 bar 8700 psi
60 l/min 15.8 gpm

■ P560/S

Lunghezza 750/1000mm
Lenght 750/1000mm

600 bar 8700 psi
60 l/min 15.8 gpm

UGELLI / NOZZLES

■ N1

Acciaio inox
Stainless
steel

max. 300 bar
max. 4350 psi

SLITTE TENDICINGHIE SLIDES

■ TC-G

Per installazioni fino a 50 hp/37 kW
For installation up to 50 hp/37 kW